

# **Introduction to Bushfire Safety in the Workplace**

SA Country Fire Service  
Community Education Unit

# Overview

- Bushfire behaviour
- Bushfire risk
- Key CFS messages
- Bushfire survival planning
- Prepare. Act. Survive.

# Bushfire safety and survival for business and organisations

STEP 1

Understand Bushfire Danger



STEP 4

Prepare Your People



STEP 2

Understand Bushfire Danger



STEP 5

Prepare Your Worksite



STEP 3

Prepare Your Organisation



STEP 6

Prepare & Practise Your Plan



# **The 3 factors that affect bushfire behaviour**

Fuel

Weather

Topography



# How do Buildings Burn?

| <b>STAGE 1</b><br>Before the<br>Fire Front | <b>STAGE 2</b><br>During the<br>Fire Front    | <b>STAGE 3</b><br>After the<br>Fire Front |
|--|---|---|
| Up to<br>60 Minutes                        | 5 to 10 minutes                               | Many hours / days                         |
| Ember Attack                               | Radiant Heat<br>Flame Contact<br>Ember Attack | Ember Attack                              |



# Radiant Heat

- Radiant heat is the major killer in bushfires as your body can't cope with high amounts of radiant heat.
- Seeking shelter from radiant heat is critical to your survival.



# **Direct Flame Contact**





# Ember Attack







# Small Attack Points



**Garden beds**



**Shade cloth**

**Wooden decks**



**Poor storage**

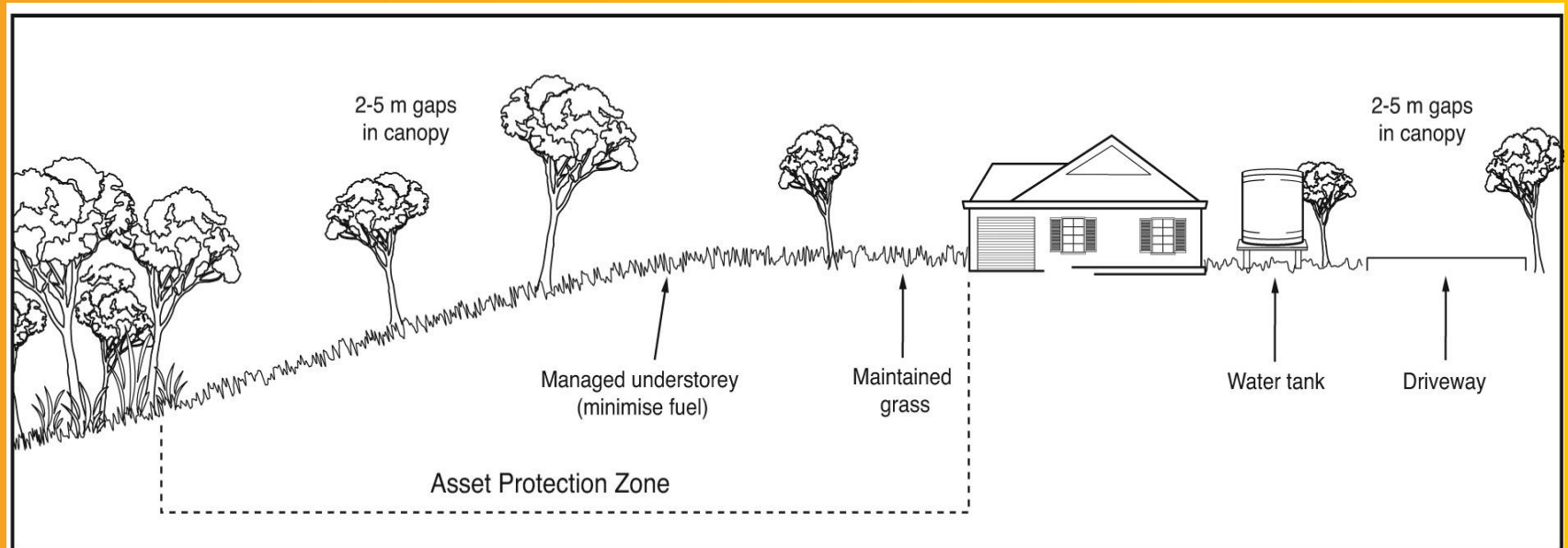


**Poor timber condition**



# Preparing your worksite

- Create a defensible space
  - Minimum of 20 metres
  - Minimise fine fuel
  - Horizontal and vertical fire breaks







# CFS Bushfire Household Self-Assessment Tool



PREPARE. ACT. SURVIVE.



[Home](#) | [Prepare](#) | [Act](#) | [Survive](#) | [Community Programs](#) | [News](#) | [Reference](#) | [FAQs](#)

Search

## Creating a Defendable House

There are 6 key steps that need to be considered when determining the defendability of your house. None of the 6 steps should be used in isolation as they are integral to each other in creating a defendable house.

### 1. ASSESS

Identify, create and maintain the defendable space around your home. Without defendable space, you and your house may not survive the passage of fire.

### 2. DECIDE

Leave early, well before a bushfire threatens.

OR

Stay and actively defend a well-prepared house.

### 3. REDUCE

Reduce the risk of ember attack on your house. 85% of houses are lost due to ember attack before, during and after a bushfire.



### 4. CONSIDER

Do you have sufficient people, resources and equipment to enable you to stay and actively defend your house for extended periods of time?

### 5. DETERMINE

Are you physically and emotionally able to actively defend your house during a bushfire?

### 6. DEVELOP

Develop your written bushfire survival plan, and **Prepare. Act. Survive.**

#### Your Options

If you are unable or choose not to complete the household bushfire self-assessment tool, then you should consider [leaving early](#), or seek further information by:

- Reading information on the [CFS website](#)
- Contacting the Country Fire Service [Bushfire Information Hotline](#) on 1300 362 361, TTY 133 677
- Joining a [Community Fire Safe group](#)





# Bushfire Safer Places

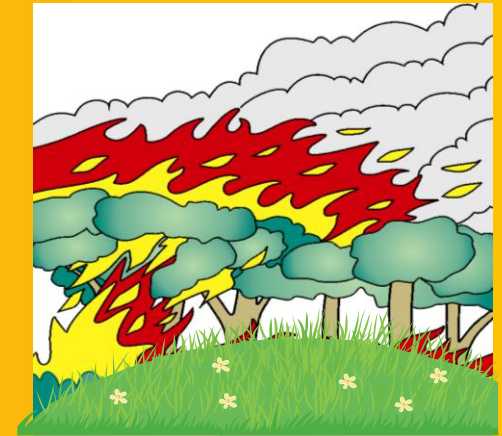
## Stay in place or relocate?



Safer  
Settlement



Bushfire Safer  
Precinct







Last Resort  
Refuges



# Bushfire Safer Precincts

## Legend

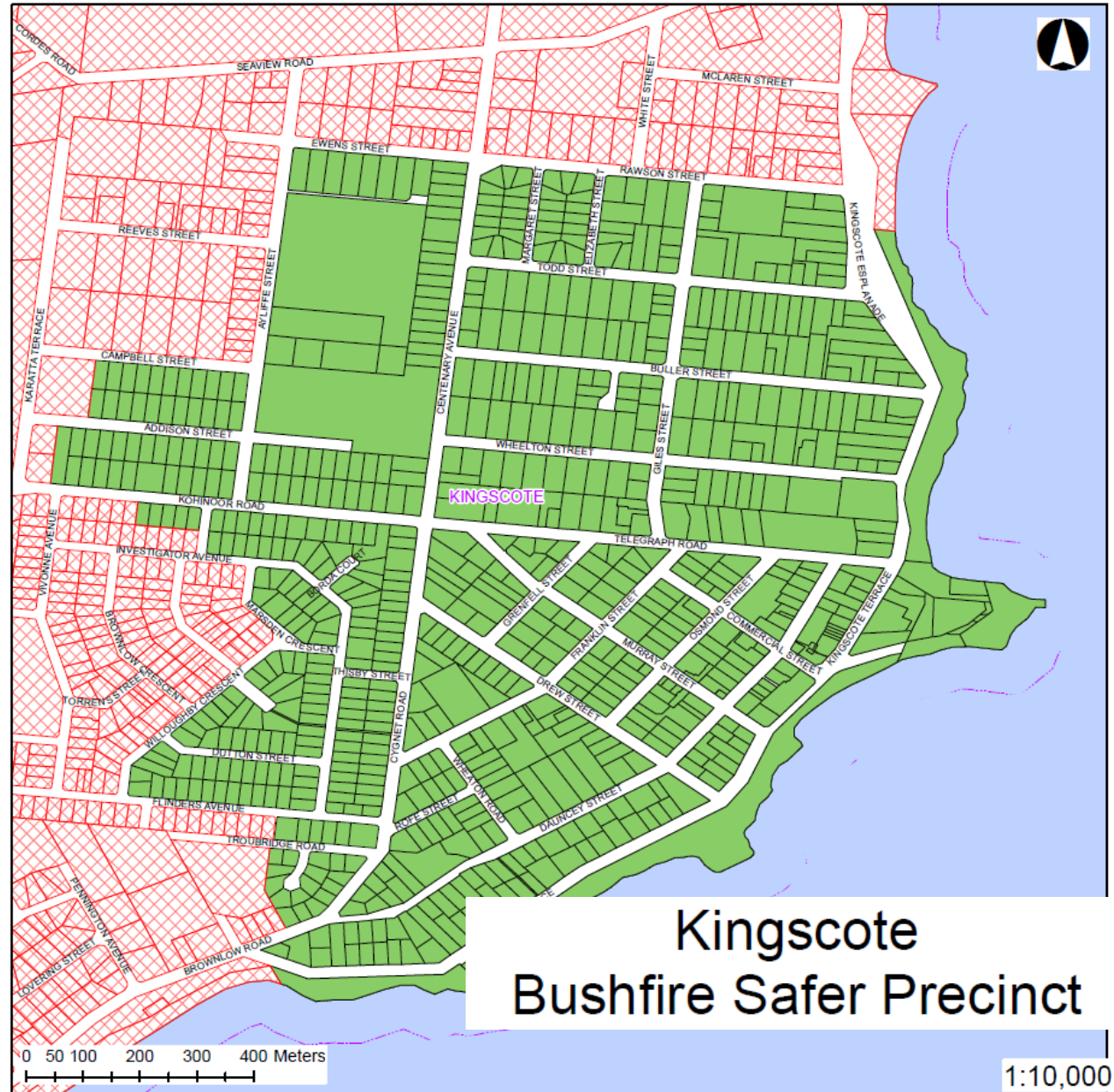
-  Railway
-  Land Parcels
-  Bushfire Safer Precinct
-  Suburbs

This map is current as of October 2010

This precinct is considered to be relatively safe from fire due to its low levels of fuel. Although the CFS has taken every care and precaution in identifying this area it will be subjected to spark and ember attack in the event of a fire.

It is recommended that several Bushfire Safer Precincts/Settlements be identified when creating a personal Bushfire Survival Plan. Templates for Bushfire Survival Plans are available from the CFS website.

[www.cfs.sa.gov.au](http://www.cfs.sa.gov.au)



# Last Resort Refuges



PREPARE. ACT. SURVIVE

[Home](#) | [Prepare](#) | [Act](#) | [Survive](#) | [Community Programs](#) | [News](#) | [Reference](#) | [FAQs](#)

## Kangaroo Island Council Area

### Last Resort Refuges

| Location       | Site Name                          | Open Space | Address   | Fire Ban District |
|----------------|------------------------------------|------------|---|-------------------|
| American River | American River - Wharf             | Open Space | Tangara Drive, American River SA 5221                   | Kangaroo Island   |
| Emu Bay        | Emu Bay - Boat ramp and Beachfront | Open Space | Emu Bay SA 5223   | Kangaroo Island   |
| Parndana       | Parndana Oval                      | Open Space | Daw Street, Parndana SA 5220                            | Kangaroo Island   |
| Stokes Bay     | Stokes Bay Beach                   | Open Space | Stokes Bay SA 5223                                      | Kangaroo Island   |
| Wisanger       | Wisanger Oval                      | Open Space | Corner Emu Bay Road & North Cape Road, Wisanger SA 5223 | Kangaroo Island   |

[Return to Last Resort Refuges](#)

[Home](#) | [Sitemap](#) | [Disclaimer](#) | [Privacy](#) | Copyright © Country Fire Service



Government of  
South Australia

sa.gov.au  
Find what you're looking for

# Fire Danger Ratings

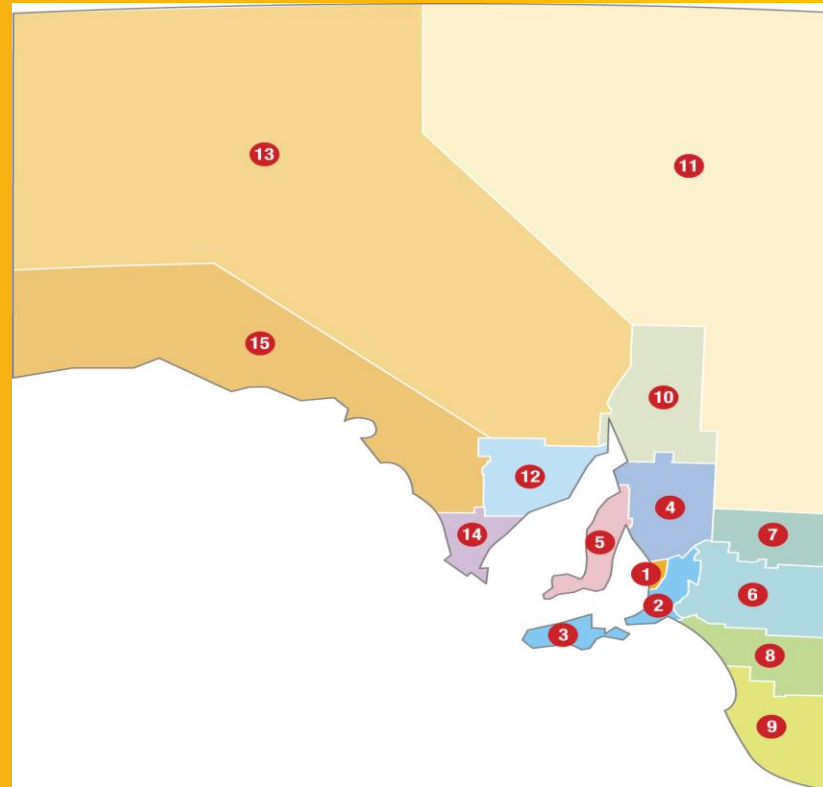
| Fire Danger Rating    | Recommended Action   |
|-----------------------|--|
| <b>CATASTROPHIC</b>   | For your survival, leaving is the best option  |
| <b>EXTREME</b>        | Leaving is the safest option for your survival   |
| <b>SEVERE</b>         | Leaving is the safest option for your survival. Only stay if you & your buildings are well prepared and you can actively defend it during a fire |
| <b>VERY HIGH</b>      | Only stay if your buildings are well prepared and you are prepared and you can actively defend   |
| <b>HIGH</b>           | Know where to get more information & monitor the situation for any changes   |
| <b>LOW - MODERATE</b> | Know where to get more information & monitor the situation for any changes   |



# Monitoring fire weather warnings

## SA Fire Ban Districts

1. Adelaide Metropolitan Area
2. Mount Lofty Ranges
3. Kangaroo Island
4. Mid North
5. Yorke Peninsula
6. Murraylands
7. Riverland
8. Upper South East
9. Lower South East
10. Flinders
11. North East Pastoral
12. Eastern Eyre Peninsula
13. North West Pastoral
14. Lower Eyre Peninsula
15. West Coast





South Australian  
Country Fire Service

Contact Us | Site Map | Links

Members only

SEARCH

Advanced Search



Home About Us News & Media **Fire Restrictions** Fire Safety Community Information Education Training Join Us Links

Fire Restrictions Find your Fire Ban District



Current Incidents

Current Warnings

Current Firebans

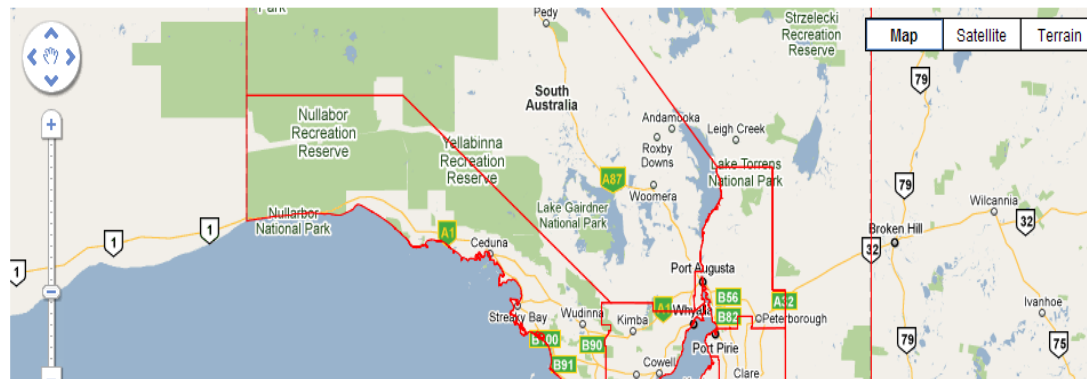
## Find your Fire Ban District

This tool will help you determine which fire ban district you live in. By typing in your address you will then be shown the location on the map via a pin (small red mark). To find out the fire ban district you are located in, click next to the pin. If you have any questions regarding the fire ban district you are in, please call the CFS Bushfire Hotline on 1300 362 361, TTY on 133 677.

[Current Fire Ban Ratings](#)

Enter "street, suburb/town" or just suburb/town (NOT postcode) and press Go.

Go!





South Australian  
**Country Fire Service**

[Advanced Search](#)

**Dial 000 in an  
Emergency**


[Home](#)[About Us](#)[News & Media](#)[Fire Restrictions](#)[Fire Safety](#)[Community Information](#)[Education](#)[Training](#)[Join Us](#)[Links](#)

## Current Incidents

Ongoing Incidents: 5

Total Incidents: 7

- [View Full Incident List](#)
- [Prescribed Burns](#)

 [Current Incidents](#) [RSS](#)

 [Current Warnings](#) [Help](#)

[Current Incidents](#)[Current Fire Danger Ratings](#)[Fire Safety Tips](#)[Bushfire Ready](#)

## News & Updates [View All](#)

19/10/2010

Prescribed burn in Cox Scrub  
Conservation Park

19/10/2010

Prescribed burn at Mount Scott  
Conservation Park in the South East

19/10/2010

Small prescribed burn in Cleland  
Conservation Park this afternoon

18/10/2010

MAJOR REVAMP TO COUNTRY FIRE  
SERVICE WEBSITE

### About the CFS

- [What We Do](#)
- [History](#)
- [CFS Foundation](#)
- [Centre for Lessons Learned](#)

### Join Us

- [How to Become a Volunteer](#)
- [Cadets](#)
- [Recruitment](#)
- [Contacts](#)

### Community Education

- [Community Meetings](#)
- [Bushfire Household Self-Assessment Tool](#)
- [Brochures & DVDs](#)

### Bushfire Action Week



**PREPARE. ACT. SURVIVE.**

### Bushfire SAFER Places



**Where to relocate on days  
of Severe, Extreme and  
Catastrophic fire weather**



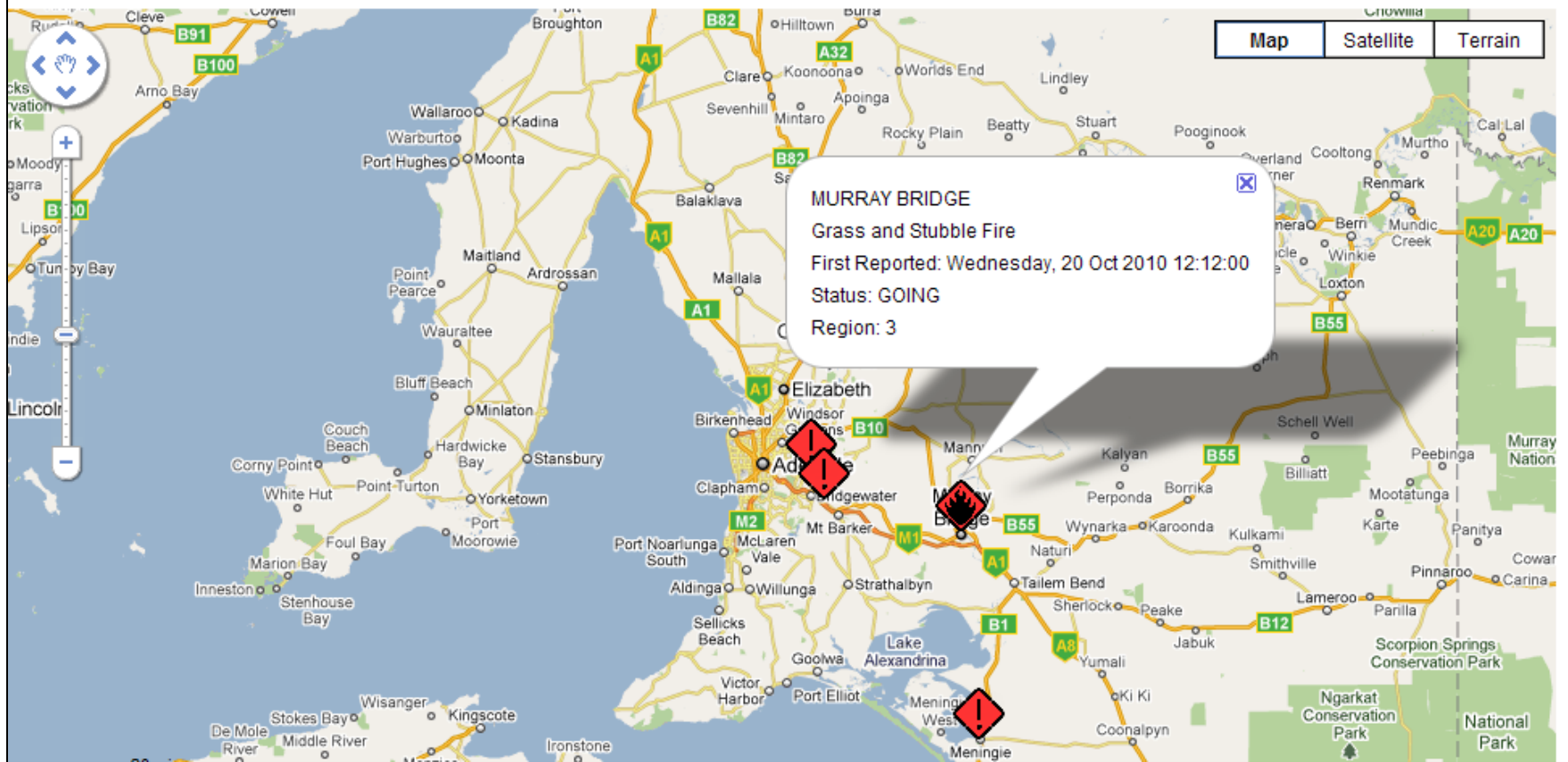


# Incident Summary

[Current Incidents](#)[Current Warnings](#)[Current Firebans](#)

SA Country Fire Service (CFS) responds to a range of incidents across South Australia. Our daily/going incidents are listed below.

**Definitions:** [Date](#) | [Time](#) | [EWM/WAM](#) | [Location/Incident Name](#) | [Region](#) | [Type](#) | [Status](#) | [Level](#)

**Map View****Table View**Bushfire:  
GoingBushfire:  
SafeBushfire:  
CompleteOther:  
GoingOther:  
SafeOther:  
CompleteStatus:  
GoingStatus:  
SafeStatus:  
Complete

# Preparing to travel

- Check weather conditions before leaving
- Fit car out with:
  - Woollen blanket
  - First aid kit
  - Containers of water
  - Fire extinguisher
- Keep phone charged
- Keep fuel tank full and car in good order
- Put the CFS Bushfire Information Hotline number in your phone



# How do People Survive?



## Options

1. Leave early
2. Stay and defend
3. Never leave late

**Radiant heat is the biggest killer**



# Don't get caught out on the road



Always u turn to safety whenever you can



# **Sheltering in a Vehicle**

- If caught in a bushfire while driving
  - Drive into a clear area
  - Leave headlights on
  - Roll up windows and close vents
  - Shelter below window level
  - Cover your body with woolen blankets
  - Drink water frequently

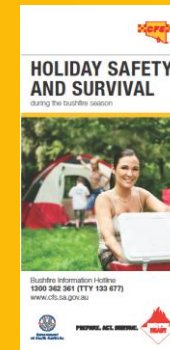
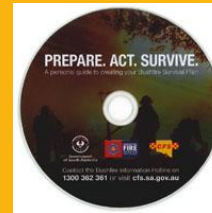
**It is unlikely  
that your fuel  
tank will  
explode**



## Bushfire Safety in the Workplace

# Resources

- Bushfire Information Hotline  
1300 362 361 (TTY 133 677)
- Websites  
[www.cfs.sa.gov.au](http://www.cfs.sa.gov.au)  
[www.bom.gov.au](http://www.bom.gov.au)  
[www.environment.sa.gov.au/fire](http://www.environment.sa.gov.au/fire)
- Radio Stations  
Local ABC Radio, 5aa & others
- Join or start a Community Fire Safe Group
- Organise a Bushfire Ready Workshop
- Contact your Council Fire Prevention Officer



*Also available:  
large print, audio,  
& 14 languages*